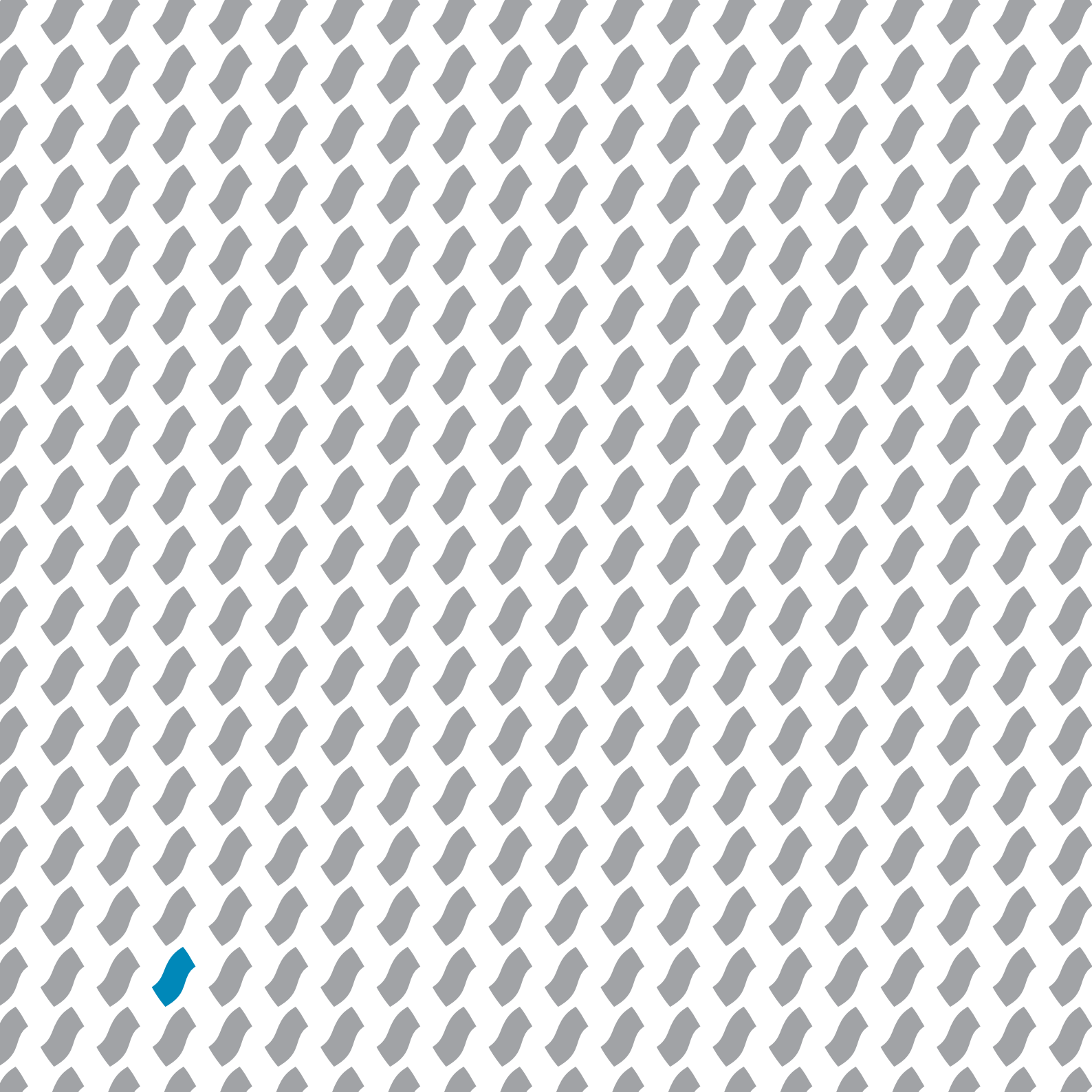




S O W I T E C





THE ENERGY OF FUTURE



History

Renewable energy is SOWITEC's core business. Founded in 1993 by Frank Hummel, SOWITEC's main activity has been developing renewable energy applications. Over the years, wind and solar energy have become the focal point.

SOWITEC has realised over 100 turbines in 30 wind farms across Germany. Constantly growing, the SOWITEC group employs a staff of over 200 members. These are based in Germany and abroad. The people at SOWITEC are convinced that renewable energy sources will become an essential and integral part of tomorrow's electricity supply. With significant experience and knowledge, SOWITEC group will actively contribute to this growing market and accelerate developments.

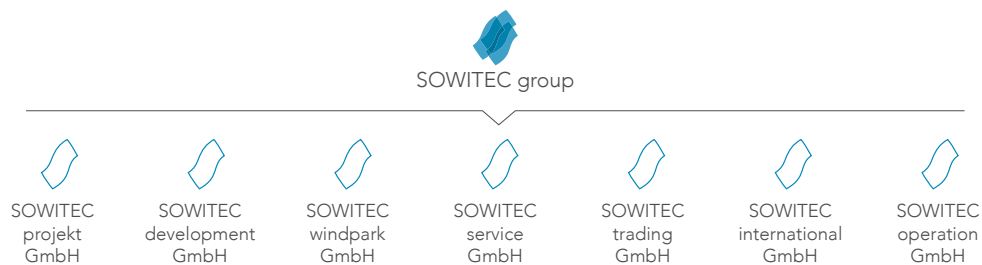
Corporate Structure

Due to SOWITEC's strong growth over the past years and in order to match the upcoming challenges, the company expanded into a new structure in the middle of 2007.

Today, SOWITEC group consists of the direct affiliates being responsible for individual business segments.

- ▶ SOWITEC projekt
- ▶ SOWITEC development
- ▶ SOWITEC windpark
- ▶ SOWITEC service
- ▶ SOWITEC trading
- ▶ SOWITEC international
- ▶ SOWITEC operation

Together, these subsidiaries cover all relevant domains of project development. On the international stage, SOWITEC has established market presence by creating associated entities in Brazil, Argentina, Uruguay, Chile, Mexico, Peru, Colombia, Kazakhstan, Saudi Arabia and Russia. Development plans for further representations in other countries are being prepared.





Engineering, Design, Construction

SOWITEC has been involved in project engineering, design and construction of wind farms for the past years.

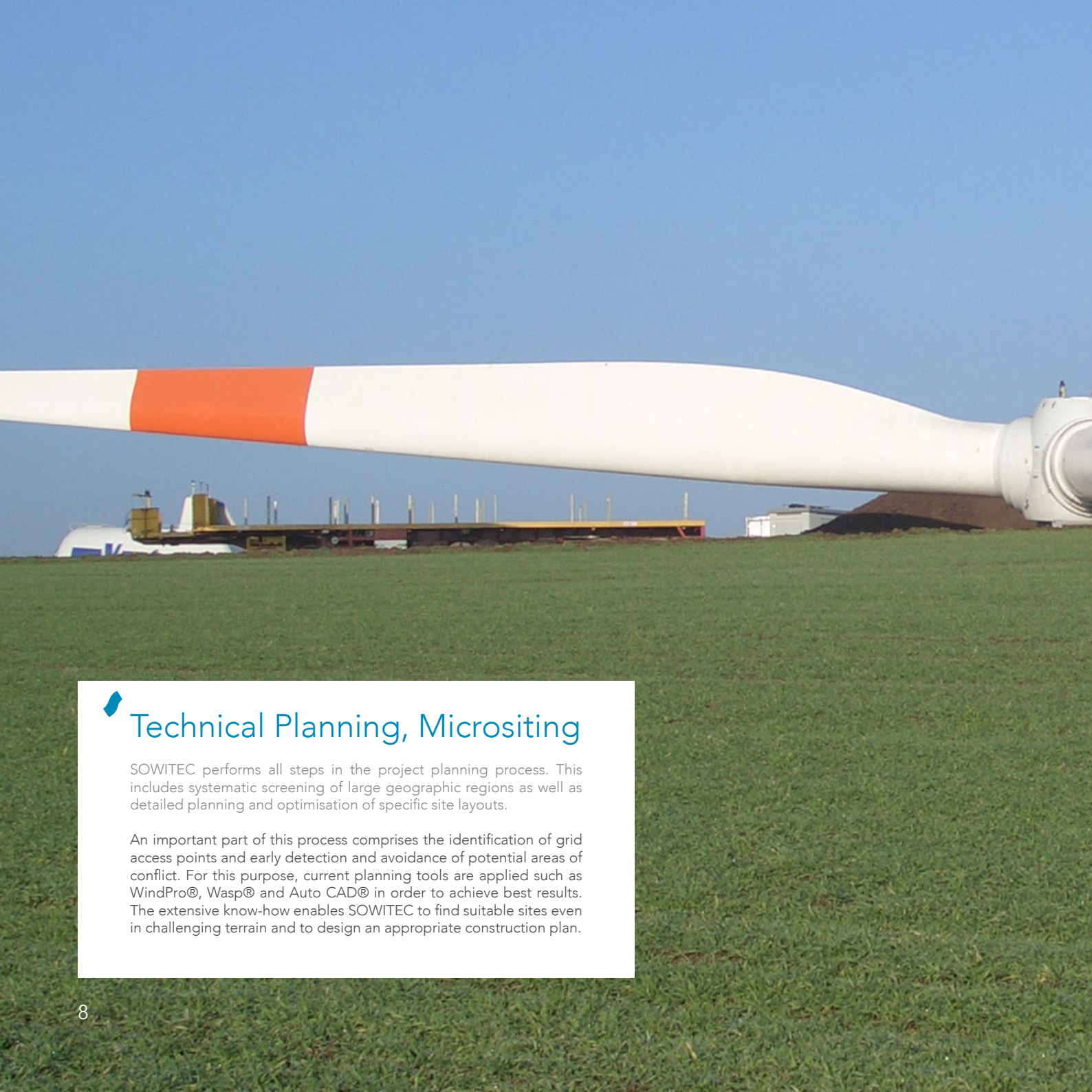
SOWITEC provides full service beginning with the identification, arrangements of land leases, acquisition of building permissions and grid access, technical construction management and finally commissioning of wind farms. SOWITEC's turn-key projects excel by efficiency and timely completion. The skilled team at SOWITEC draws back on 20 years of experience. This ensures a diligent and profound realisation of all planning phases.



Sales and Financing

SOWITEC offers turn-key projects ranging from single turbines to large scale wind farms and solar plants. Economic viability is of superior importance to SOWITEC and that has earned SOWITEC satisfied investors and a good reputation.

Concerning funding of wind and solar power projects, SOWITEC can arrange a variety of financing models. Credit financing through banks, independent financing, limited partnerships and investment fund financing has successfully been realised for various projects.



Technical Planning, Micrositing

SOWITEC performs all steps in the project planning process. This includes systematic screening of large geographic regions as well as detailed planning and optimisation of specific site layouts.

An important part of this process comprises the identification of grid access points and early detection and avoidance of potential areas of conflict. For this purpose, current planning tools are applied such as WindPro®, Wasp® and Auto CAD® in order to achieve best results. The extensive know-how enables SOWITEC to find suitable sites even in challenging terrain and to design an appropriate construction plan.



Surveys and Measurement

Wind resource and solar irradiation assessments, noise and shadow-casting surveys, visibility and visual simulations are further services offered by SOWITEC.

Additionally, expert reports on project yield and economic viability can be compiled. One major focal point of SOWITEC are wind and solar irradiation measurements performed by means of measuring masts as well as the company's own Sodar devices. Numerous survey and expert reports from national and international projects provide the specialists of SOWITEC in the development department with an outstanding and ever growing knowledge base.

A person wearing a red jacket and a helmet is seen from behind, working on a wind turbine. The person is positioned on a metal structure, possibly a ladder or platform, and is looking towards the sky. In the background, two other wind turbines are visible against a cloudy sky. The overall scene is a high-angle shot looking down at the person and out towards the horizon.

Technical Management

SOWITEC is operating wind turbines since 1995. By now, SOWITEC provides technical management to more than 100 turbines.

SOWITEC's team receives continuous training on the subject of new turbine models and technical development. This ensures optimum technical management services. Smooth, uninterrupted turbine performance is of utmost importance to SOWITEC. The online monitoring system, 24 h emergency service and the on-site network of local trouble-shooters secure maximum turbine availability. This concept proves to be very successful through short downtimes of all turbines. SOWITEC's remote online monitoring is based on continually improved software, specifically designed for performance monitoring of wind turbines.



Technical Management Concept

All operational data is recorded by SOWITEC's monitoring system.

Performance characteristics are reviewed to identify areas for optimisation. Additionally, visual controls are performed on a regular basis. At fixed intervals SOWITEC's technicians inspect the turbine condition with turbine manufacturing experts. SOWITEC and turbine manufacturers work closely together to analyse malfunctions together to remedy each defect as fast as possible.



Clean Development Mechanism

2007 SOWITEC prepared the foundation for CDM activities by training staff, establishing connections to external consultants, Designated Operational Entities and Designated National Authorities throughout the years. SOWITEC visited several carbon credit expositions in Europe and Latin America gaining technical knowledge, establishing networks and collecting market intelligence.

Initially, the CDM department was integrated into SOWITEC's international entity to elaborate the first Project Idea Notes (PINs) and to start with the compilation of Project Design Documents (PDDs). Due to the great importance of the Clean Development Mechanism for SOWITEC's projects, an exclusive subsidiary for CDM activities and electricity trade has been installed 2009.



Power Trading

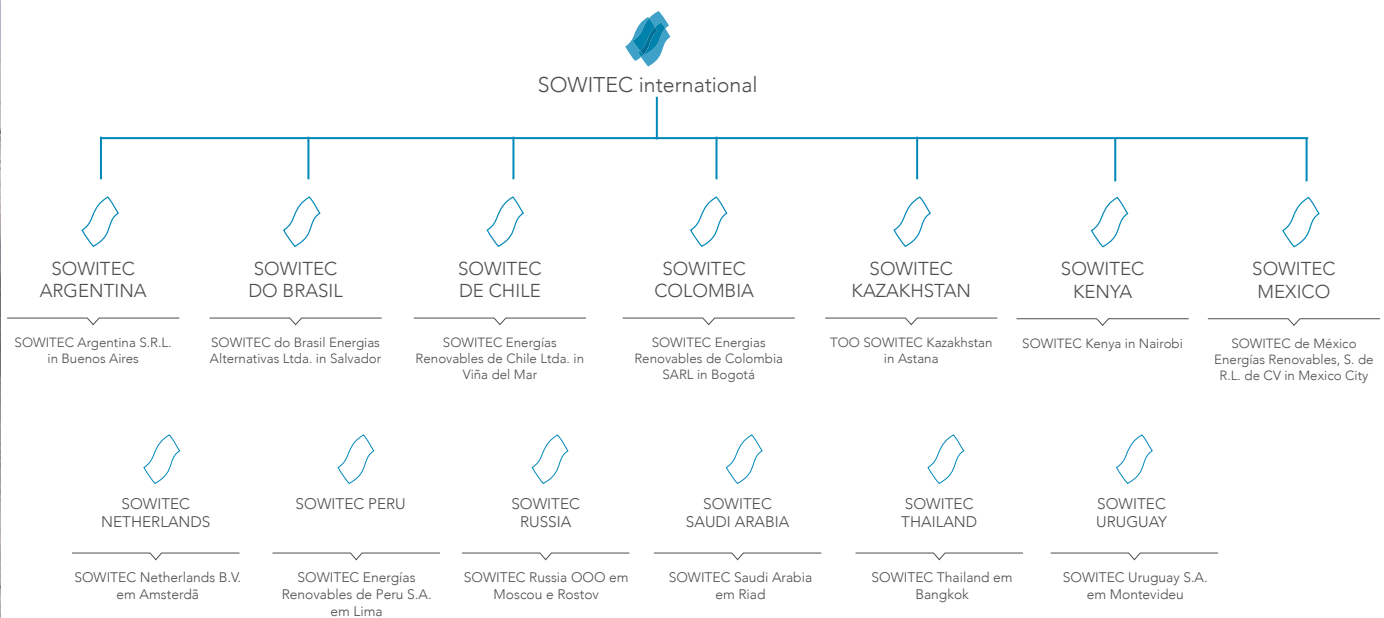
SOWITEC trading GmbH's core business is the registration of CDM projects and power trading of electricity from renewable energy projects in Germany and abroad.

The committed team consists of a department in Germany and network support from Latin America. Cooperation with experienced, external CDM consultants provide successful handling of difficult registration steps. Overall, SOWITEC is well prepared for future challenges on the booming carbon and electricity markets.

New Horizons

Convinced by renewables as energy source of the future, SOWITEC's aim is to promote and establish the use of this sustainable sources of energy in foreign, emerging markets.

The team currently has several Gigawatts of wind and solar power under development at attractive sites with favourable conditions, good grid access and low conflict potential.





Prospective Markets

Besides activities in Europe, SOWITEC is currently developing emerging markets all over the world. Affiliated companies have been founded in Latin America, Russia, Kazakhstan and Saudi Arabia.

Remarkable economic growth, lack of electricity generating capacities and a shortage of expensive fossil fuels make these markets so attractive. Furthermore, the geographic locations provide excellent wind and solar resources. In 2009, SOWITEC entered the Russian market followed by a new start up in Colombia, Kazakhstan and Saudi Arabia in 2013.

SOWITEC's qualified project engineers are currently exploring this undeveloped potential. Through elaborate market research and well-detailed screening processes, SOWITEC is revealing and developing the most rewarding sites. At the same time, SOWITEC is observing further markets for wind and solar power potential worldwide.



Market Presence

SOWITEC's success is based upon the combination of business experience, technical and commercial competence and a strong network of local capacities.

These distinctive features provide the foundation for future ventures. SOWITEC entirely owns various special project companies and aims to operate its own wind farms with a total capacity of several thousand Megawatts in the future.



 RUSSIA

 NETHERLANDS
 GERMANY

 KAZAKHSTAN

 SAUDI
ARABIA

 KENYA

 THAI-
LAND



Löherstraße 24
72820 Sonnenbühl
Germany

phone +49 7128 3808-0
fax +49 7128 3808-38
info@sowitec.com
www.sowitec.com

