



SoWITEC GROUP

ENGLISH

SoWiTEC GROUP

Renewable energy is SoWiTec's core business. Founded in 1993 by Frank Hummel, SoWiTec's main activity has been developing renewable energy applications. Over the years, wind power has become the primary focal point.

By 2007, SoWiTec has realized over 100 wind turbines in 30 wind farms across Germany. Constantly growing, the SoWiTec group employs a staff of 120 members. These are based in Germany and abroad. The people at SoWiTec are convinced that wind power will become an essential and integral part of tomorrow's electricity supply. It is a clean and sustainable source of energy. With significant experience and knowledge, the SoWiTec group will actively contribute to this growing market and accelerate developments.

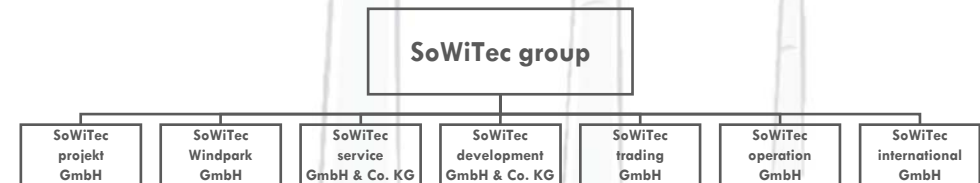
COMPANY BACKGROUND



CORPORATE STRUCTURE



Due to SoWiTec's strong growth over the past years and in order to match the upcoming challenges, the company expanded into a new structure in the middle of 2007. Today, the SoWiTec group consists of the direct affiliates: SoWiTec project, SoWiTec development, SoWiTec Windpark, SoWiTec service and SoWiTec international. SoWiTec trading and SoWiTec operation have been founded in 2009. All affiliates look after individual business segments. Together, these subsidiaries cover all relevant domains of wind power development. On the international stage, SoWiTec has established market presence by creating associated entities in France, Brazil, Argentina, Uruguay, Chile, Mexico, Peru and Russia. Development plans for further representations in other countries are being prepared.



ENGINEERING, DESIGN, CONSTRUCTION



SoWiTec projekt has been involved in project engineering, design and construction of wind farms for the past 17 years. SoWiTec projekt provides full service beginning with site identification, arrangement of land leases, acquisition of building permissions and grid access, technical construction management and finally commissioning of the wind farm. SoWiTec's turn-key projects excel by efficiency and timely completion. The skilled team at SoWiTec projekt draws back on 17 years of experience. This ensures a diligent and profound realization of all planning phases.



SALES & FINANCING

SoWiTec projekt offers turn-key projects ranging from single turbines to large scale wind farms. Economic viability is of superior importance to SoWiTec and that has earned SoWiTec satisfied investors and a good reputation. Concerning funding of wind power projects, SoWiTec projekt can arrange a variety of financing models. Credit financing through banks, independent financing, limited partnerships and investment fund financing has successfully been realized for various wind farms.



SoWiTec DEVELOPMENT



TECHNICAL PLANNING, MICROSITING

SoWiTec development performs all steps in the project planning process. This includes systematic screening of large geographic regions as well as detailed planning and optimization of a specific site layout. An important part of this process comprises the identification of grid access points and early detection and avoidance of potential areas of conflict.

For this purpose, current planning tools are applied such as WindPro®, Wasp®, Arcview® and AutoCAD® in order to achieve best results.

This extensive know-how enables SoWiTec development to find suitable sites even in challenging terrain and to design an appropriate construction plan.



SURVEYS, WIND MEASUREMENT



Wind resource assessments, noise and shadow - casting surveys, visibility analysis and visual wind farm simulations are further services offered by SoWiTec development. Additionally, export reports on project yield and economic viability can be compiled. One major focal point of SoWiTec development are wind measurements performed by means of measuring masts as well as the company's own sodar device.

Numerous survey and expert reports from national and international projects provide SoWiTec development with an outstanding and ever growing knowledge base.



TECHNICAL MANAGEMENT

SoWiTec is operating wind turbines since 1995. By now, SoWiTec service provides technical management to more than 100 turbines. The SoWiTec service team receives continuous training on the subject of new turbine models and technical development. This ensures optimum technical management services.

Smooth, uninterrupted turbine performance is of utmost importance to SoWiTec. The SoWiTec online monitoring system, 24h emergency service and the “on-site” network of local trouble-shooters secure maximum turbine availability.

This concept proves very successful through notably short down – times of all turbines. SoWiTec development remote online monitoring is based on continually improved software, specifically designed for performance monitoring of wind turbines.



TECHNICAL MANAGEMENT CONCEPT

All operation data is recorded by SoWiTec's monitoring system. Performance characteristics are reviewed to identify areas for optimization. Additionally, visual controls are performed on a regular basis. At fixed intervals SoWiTec service technicians inspect the turbine condition with turbine manufacturing experts. SoWiTec service and turbine manufacturers work closely together to analyse malfunctions together to remedy each defect as fast as possible.



SoWiTEC TRADING

2007 SoWiTec international prepared the foundation for CDM activities by training staff, establishing connections to external consultants, Designated Operational Entities and Designated National Authorities throughout the years. SoWiTec visited several carbon credit expositions in Europe and Latin America, gaining technical knowledge, establishing networks and collecting market intelligence. Initially, the CDM department was integrated into SoWiTec international to elaborate the first Project Idea Notes (PINs) and to start with the compilation of Project Design Documents (PDDs).

Due to the great importance of the Clean Development Mechanism for SoWiTec projects an exclusive subsidiary for CDM activities and electricity trade has been installed in January 2009.

CLEAN DEVELOPMENT MECHANISM



POWER TRADING



SoWiTec trading's core business is the registration of CDM projects and wind power trading in Germany and Latin America. The committed team currently consists of four employees in Sonnenbühl and network support from Latin America. Cooperation with experienced, external CDM consultants provides successful handling of difficult registration steps.

Overall, the new SoWiTec trading is well prepared for future challenges on the booming carbon and electricity markets worldwide.



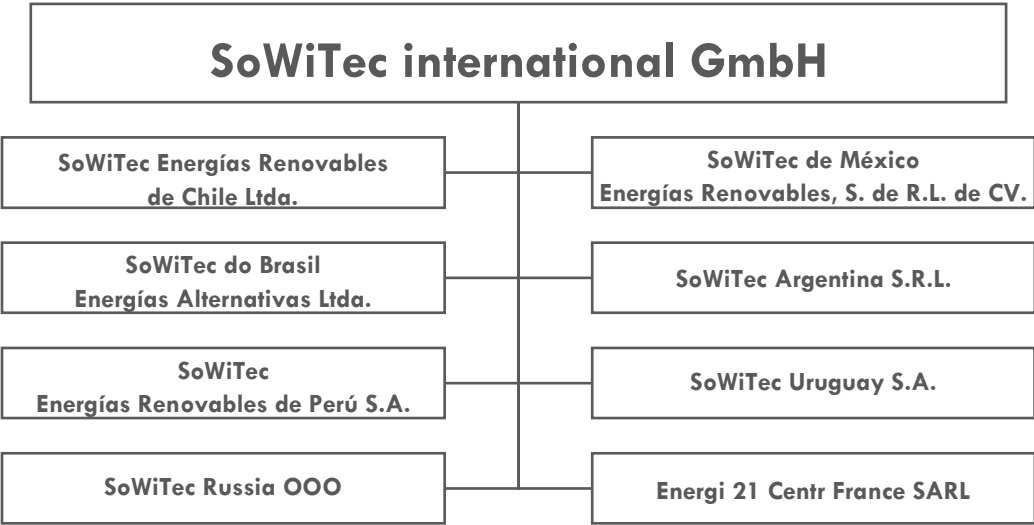
NEW HORIZONS

Convinced by wind power as energy source of the future, SoWiTec international's aim is to promote and establish the use of this sustainable source of energy in foreign, emerging markets. The team of over 120 employees currently has over 40,000 MW of wind power under development at attractive sites with favourable wind conditions, good grid access and low conflict potential.



PROSPECTIVE MARKETS

Besides activities in France, SoWiTec international is currently developing emerging markets in Latin America. Affiliated companies have been founded in Brazil, Argentina, Uruguay, Peru, Mexico and Chile. Remarkable economic growth, lack of electricity generating capacity and a shortage of expensive fossil fuels make these markets so attractive. Furthermore, the geographic locations provide excellent wind resources. SoWiTec international's qualified project engineers are currently exploring this undeveloped potential. Through elaborate market research and well-detailed screening processes, SoWiTec international is revealing and developing the most rewarding sites. At the same time, SoWiTec international is observing further markets for wind power potential. In 2009, SoWiTec entered the Russian market and is currently developing an initial portfolio of projects with a capacity of approximately 5,000MW.



SoWiTec OPERATION

MARKET PRESENCE

SoWiTec's success is based upon the combination of business experience, technical and commercial competence and a strong network of local capacities. These distinct features provide the foundation for future ventures.

SoWiTec operation entirely owns various special project companies in Latin America and aims to operate its own wind farms with a total installed capacity of several 1000 MW in the future.

CONTACT



SoWiTec group
Löherstraße 24
D - 72820 Sonnenbühl
Germany
Phone: +49 71 28 38 08 0
Fax: +49 71 28 38 08 38
Email: info@sowitec.com
www.sowitec.com